

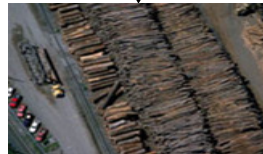
## Raw Materials,

Pulpwood is received from multiple sources, The Supply Chain is structured to ensure resilience and continuity



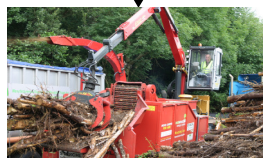
## Raw Materials,

A Supply of Pulpwood is stored local to the plant to ensure continuity of supply. A minimum of two weeks raw materials are stored at any point. Size and Scale of Storage Facility will be dependant on permissible moisture content of chip



## Woodchip Manufacture & Storage

Woodchip Manufacture is carried out to ensure a minimum of one weeks woodchip resources are available, this again is structured to ensure continuity of supply



## Woodchip Quality Control

Woodchip deliveries are tested as agreed to verify weight and also moisture content, these measurements are then utilised to determine the energy content of each load and financial value of each load based on pre-agreed criteria,



## Woodchip Delivery

Woodchip delivery solutions will vary dependant on the proximity of the storage facility to the site, it will be a tipped, moving floor or similar approved solution due to the potential volume required

